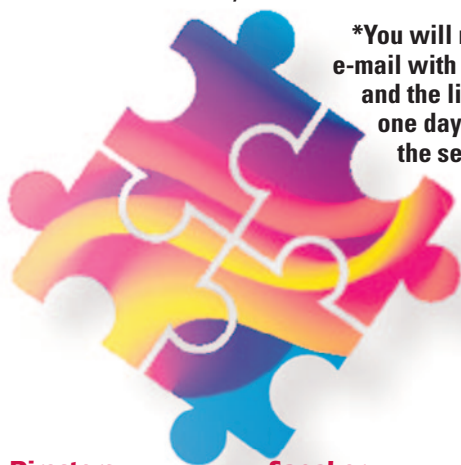


Intellectual and Development Disabilities (IDD) Education Series

Autism in Clinical Practice: Understanding, Diagnosing, and Supporting Neurodivergent Patients

Thursday, June 5, 2025
6:00 PM - 8:00 PM

Cooper Conference Center Room CC103/104
and virtually via Teams*



*You will receive an e-mail with instructions and the link to join one day prior to the session.

Activity Directors:



Sally A. French, MSN, APN, PMHNP-BC
Lead APN, Psychiatry
Department of Psychiatry and Behavioral Health
Cooper University Health Care
Camden, NJ



Mary J. Monari-Sparks, MD
Division of Internal Medicine
Department of Medicine
Cooper University Health Care
Assistant Professor of Medicine
Cooper Medical School of Rowan University
Camden, NJ



Erin Shipley, CEN, MSN, RN
Vice President, Consumer Experience
Cooper University Health Care
Camden, NJ

Speaker:



Caroline Eggerding, MD
Former Head, Division of Neurology and Development
Children's Regional Hospital at Cooper
Cooper University Health Care
Camden, NJ

Intended Audience:

The intended audience includes primary care physicians, advanced practice nurses, physician associates, psychologists, residents, fellows, and any other health care professionals with an educational need or interest in this topic.

Cancellation Policy: The Cooper Health System reserves the right to cancel this conference due to insufficient enrollment or other unforeseen circumstances.

Please Note: If you are unable to attend after registering, please contact us as soon as possible at (856) 382-6480.

Need More Information?

Please contact:
Continuing Medical Education
The Cooper Health System
2nd Floor, Suite N-300
1 Federal Street
Camden, NJ 08103
Tel: (856) 382-6480 • Fax: (856) 382-6495
E-mail: CME@cooperhealth.edu

Preregistration is **REQUIRED** for this **FREE** CME activity.

Register on-line:

<https://cooperhealth.cloud-cme.com/IDDSeriesAutismClinical>

Or

Email **ALL** of the registration information requested below to: CME@cooperhealth.edu

Or

Mail registration and payment to: Continuing Medical Education

The Cooper Health System

2nd Floor, Suite N-300, 1 Federal Street, Camden, NJ 08103

Or

Fax registration form to: (856) 382-6495

No registrations by telephone will be accepted.

A notice will be sent to you to confirm your registration.

Pursuant to the Physician Self-Referral Law (Stark Law), Cooper is limited in the amount of nonmonetary compensation that it may provide to physicians. To ensure that it meets these regulatory limitations, Cooper documents the monetary value of your participation in each Cooper CME activity. If the monetary value provided to you would exceed these regulatory limits, you must pay to participate in the additional CME. Should you have any questions or wish to discuss this further, please contact Cooper's Compliance Department at (856) 968-7417. Thank you for your interest in the CME opportunities.

Please print.

Name & Degree:

First

M.I.

Last

Degree

Please check the status of your medical license: ☐ MD/DO - Active ☐ MD/DO - Retired

Please check if you are a ☐ Resident ☐ Fellow or ☐ PA/NP.

Address (required):

City/State/Zip:

Telephone:

☐ Home

☐ Work

☐ Mobile

Fax:

E-mail (required):

Company Name:

City/State:

Specialty/Occupation:

- ☐ Please indicate here if you DO NOT give The Cooper Health System permission to share limited contact information (learner name and degree, organization, and specialty) with any ineligible company or its agents.
- ☐ If you require assistance with hearing or vision to make this activity accessible to you, please check here and return your registration no later than May 30, 2025. We will contact you at the phone number you provide above.

Parking passes will be available. Dinner and beverages will be provided.

Overall Learner Objective:

The overall learner objective for this series is to discuss best practices for clinical interactions, communication strategies, and the importance of interdisciplinary care in supporting autistic individuals.

Learner Objectives for this Session:

- Educate health care providers, educators, and the public on the complexities of neurodivergence conditions.
- Advocate for strengths-based approaches rather than deficit-focused models.
- Address common misconceptions and bias surrounding neurodivergent individuals.
- Equip health care professionals with best practices in treating neurodivergent individuals, particularly those with co-occurring conditions.
- Offer insights into managing aggression, self-injury, and other challenging behaviors in an ethical, trauma-informed way.
- Highlight the intersection of neurodivergence and mental health, including anxiety, depression, and trauma.

Accreditation/Designation/Disclosure:



The Cooper Health System is accredited by the Accreditation Council for Continuing Medical Education to provide continuing medical education for physicians. The Cooper Health System takes responsibility for the content, quality, and scientific integrity of this CME activity.

The Cooper Health System designates this live activity for a maximum of **2 AMA PRA Category 1 Credits™** per session. Physicians should claim only the credit commensurate with the extent of their participation in the activity.

Successful completion of one hour of a continuing medical education (CME) course recognized by the American Medical Association, the American Osteopathic Association, or the American Podiatric Medical Association is equal to one hour of continuing education for New Jersey nursing license renewal (New Jersey Board of Nursing 13:37-5.3).

All faculty, planners, and others participating in continuing medical education activities sponsored by The Cooper Health System are expected to disclose all financial relationships.